

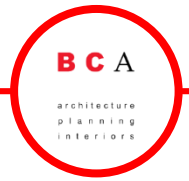


# Huntington Beach City School District



Conceptual District Vision – Eader Elementary School Site Presentation

- 1. Background of Completed Facilities Needs Assessments**
- 2. Overview of District Wide Recommended Priorities**
- 3. Preliminary Goals and Objectives**
- 4. Existing Campus Conditions**
- 5. Model Classroom and School, 21st Century Learning Overview**
- 6. Q&A**



- 1. Site Visits Were Conducted on 8/3/16 to Understand the District's Campuses**
- 2. BCA Analyzed Findings From the Site Visits**
- 3. Preliminary Priorities For Each Campus Were Established with the Superintendent and Multiple Members of the M&O Staff.**
- 4. Completed Facilities Needs Assessment Reports that Summarized BCA Findings and Recommendations**

**Priority 1:** 21st Century Classrooms and upgrades to portables, AB300 [DSA will require it to be in this phase], ADA, electrical gear/service upgrades, abatement, restroom and ADA upgrades, roof replacement, plaster repair at Dwyer.

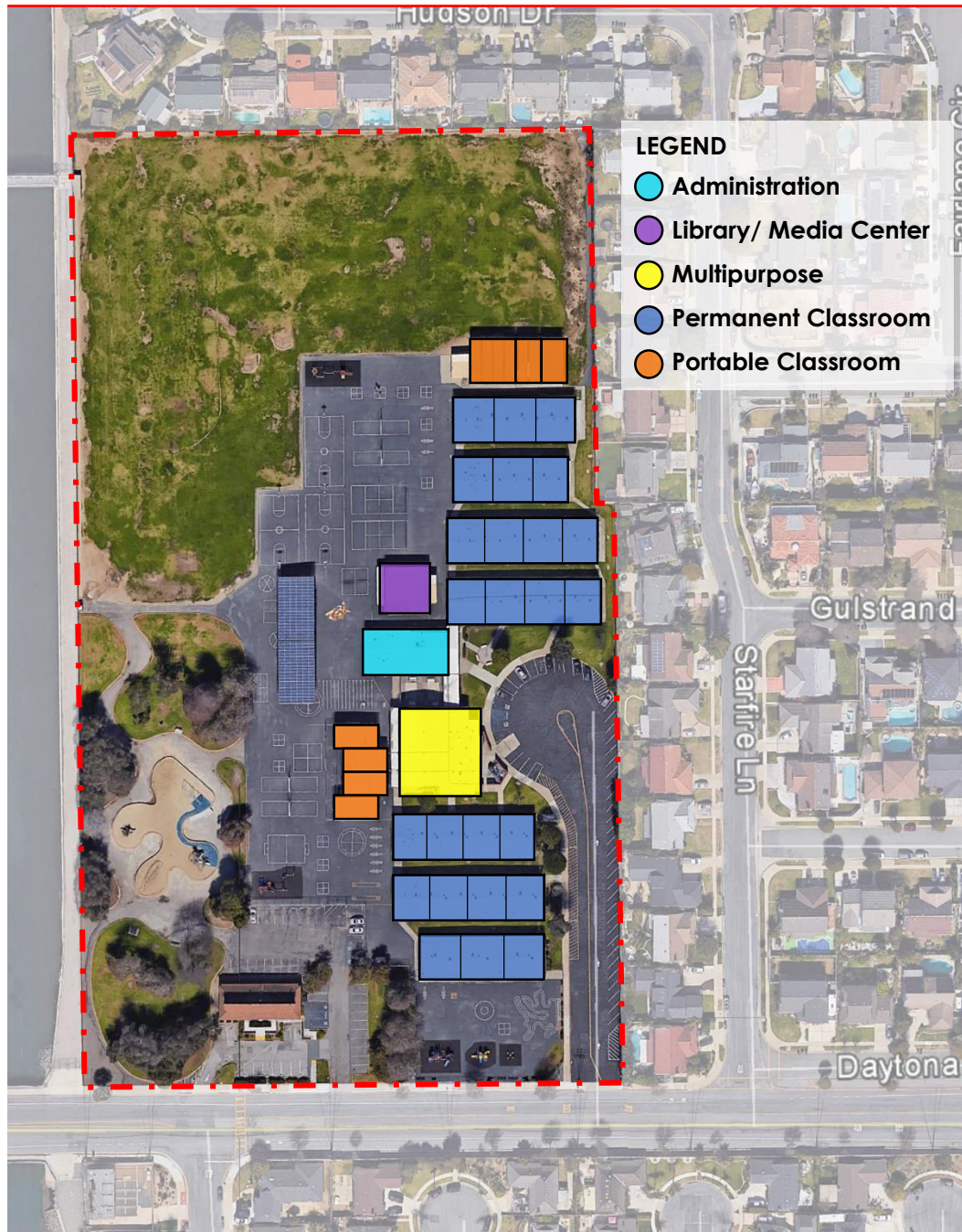
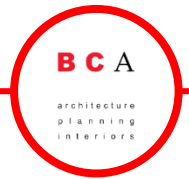
**Priority 2:** Multipurpose and STEAM Labs at the [2] Middle Schools, LED lighting and lighting controls, air conditioning and controls, new playground at Smith, Admin. rework, replace concealed spline ceilings at Sowers, upgrade Auditorium at Dwyer.

**Priority 3:** Learning Commons.

**Priority 4:** Safety and security single point of entry/exit at Admin., site fencing, remove/modify walkway canopies, restrict roof access, and portables to permanent.

1. Modernize Classrooms and Create 21<sup>st</sup> Century Standard for Huntington Beach City SD.
2. Code, Health, Infrastructure, Safety and Security.
3. Creating 21<sup>st</sup> Century Learning Environments.
  - Outdoor Learning, Maker's Labs, STEAM Labs, Learning commons
4. Repurpose Buildings/Rooms where necessary

# Existing Campus Conditions EADER ELEMENTARY SCHOOL



## Campus Analysis

Site	13.91 acres
Year Built	1965
Last Modified	2005
Grade Levels	Preschool, K-5
Permanent Classrooms	25
Portable Classrooms	7
Special Day Class [Daycare]	1 of 7 portables
YMCA Portable	1 [owned by YMCA]

## Campus Capacity

Current Enrollment	610
Permanent Classroom Capacity	700 [28 students / classroom]
Permanent Classrooms Needed	0

## Summary of Findings

- Roof overhangs require reconstruction due to water damage, [roof is repaired].
- New windows needed.
- Admin. requires rework.
- Playground requires replacement.
- New electrical service needed to solve grounding issues.
- Lighting is not Title 24 compliant, provide interior LED fixtures. Exterior LED fixture complete.
- Remove lead tile.
- Phones needed.
- Need additional Boy's restrooms.
- Parking needs rework and ADA upgrades.
- Multipurpose floor requires replacement.
- Need site access control/fencing.



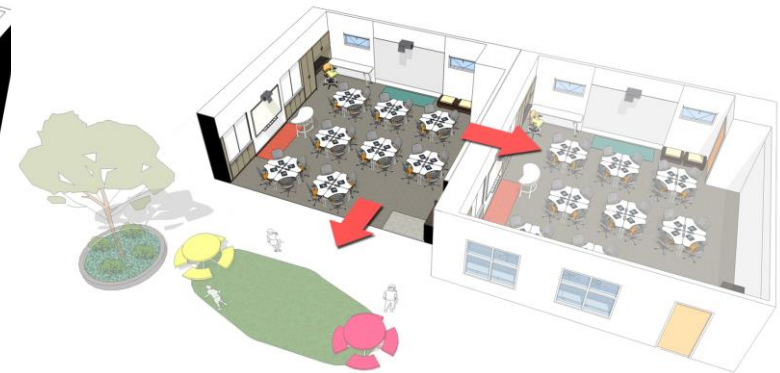
## “Good”

- 1 Interactive Display
- Rectangular Desks
- White Board Wall



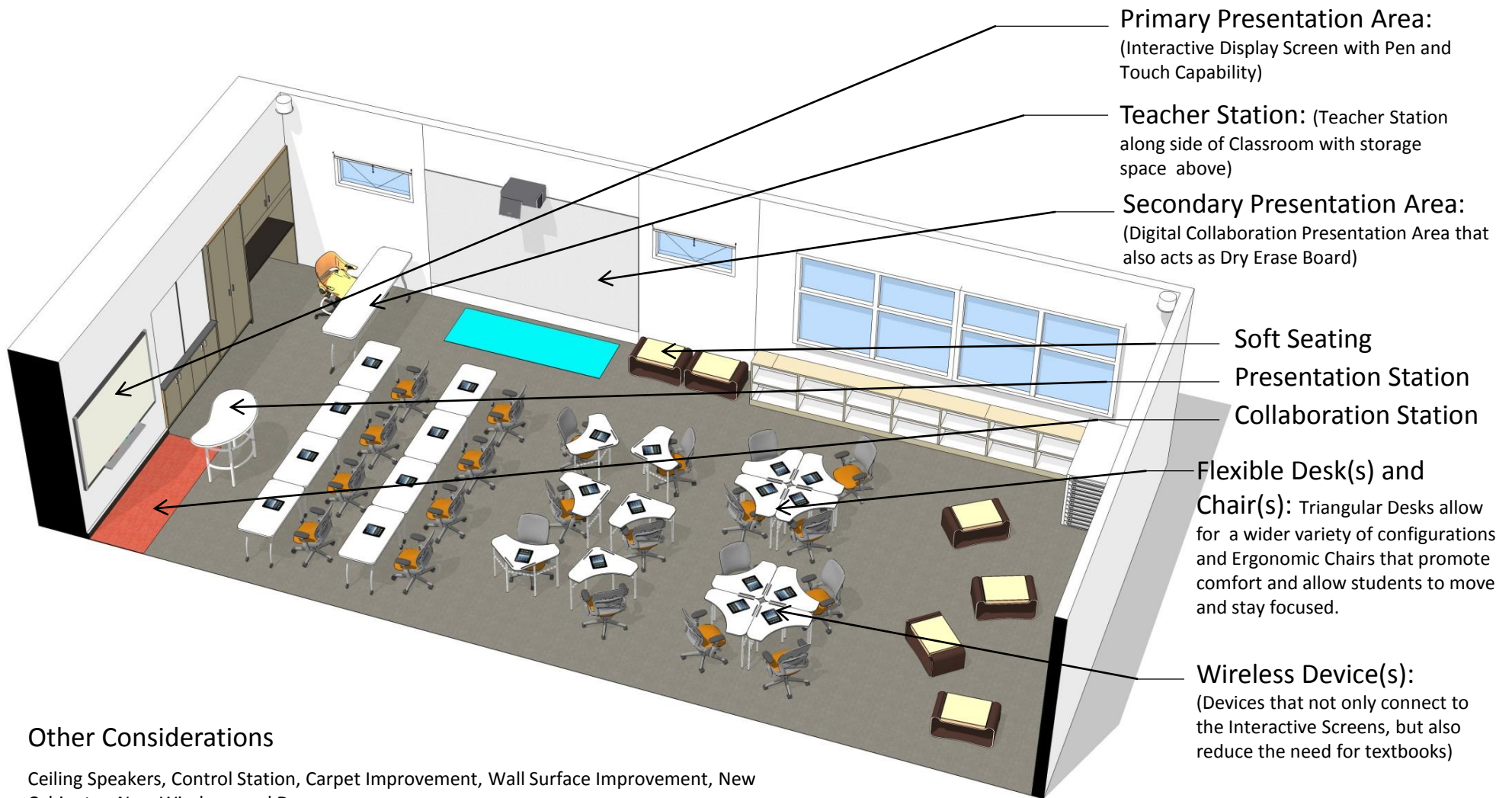
## “Better”

- 2 Interactive Displays (1 Display and 1 Interactive White Board)
- Triangular Desks
- Soft Seating



## “Best”

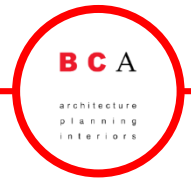
- 2 Interactive Displays (1 Display and 1 Interactive White Board)
- Triangular Desks & Soft Seating
- Nanowalls between Classrooms
- Sliding Doors that open up to Outdoor Learning



## Other Considerations

Ceiling Speakers, Control Station, Carpet Improvement, Wall Surface Improvement, New Cabinetry, New Windows and Doors.

# BCA Model School LEARNING COMMONS



# BCA Model School OUTDOOR LEARNING

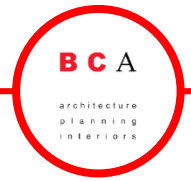




The Makers Learning Labs allow students to collaborate and work together on various projects. The Makers Labs fit into 21<sup>st</sup> Century Learning due to the flexibility in its structure and the ways in which it allows students to learn from one another.



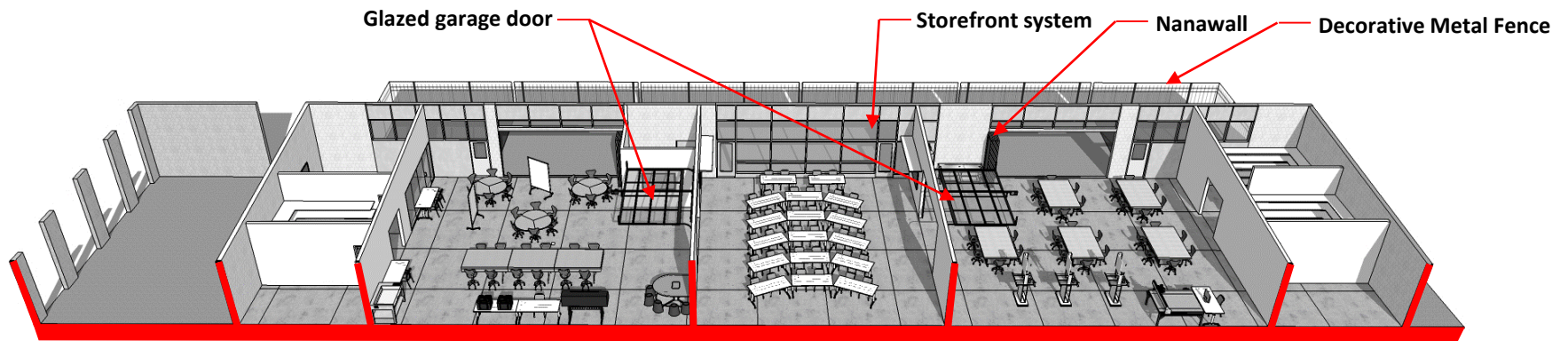
# BCA Model School BUENA PARK DEMONSTRATION CLASSROOM



# BCA Model School DARTMOUTH STEM LAB

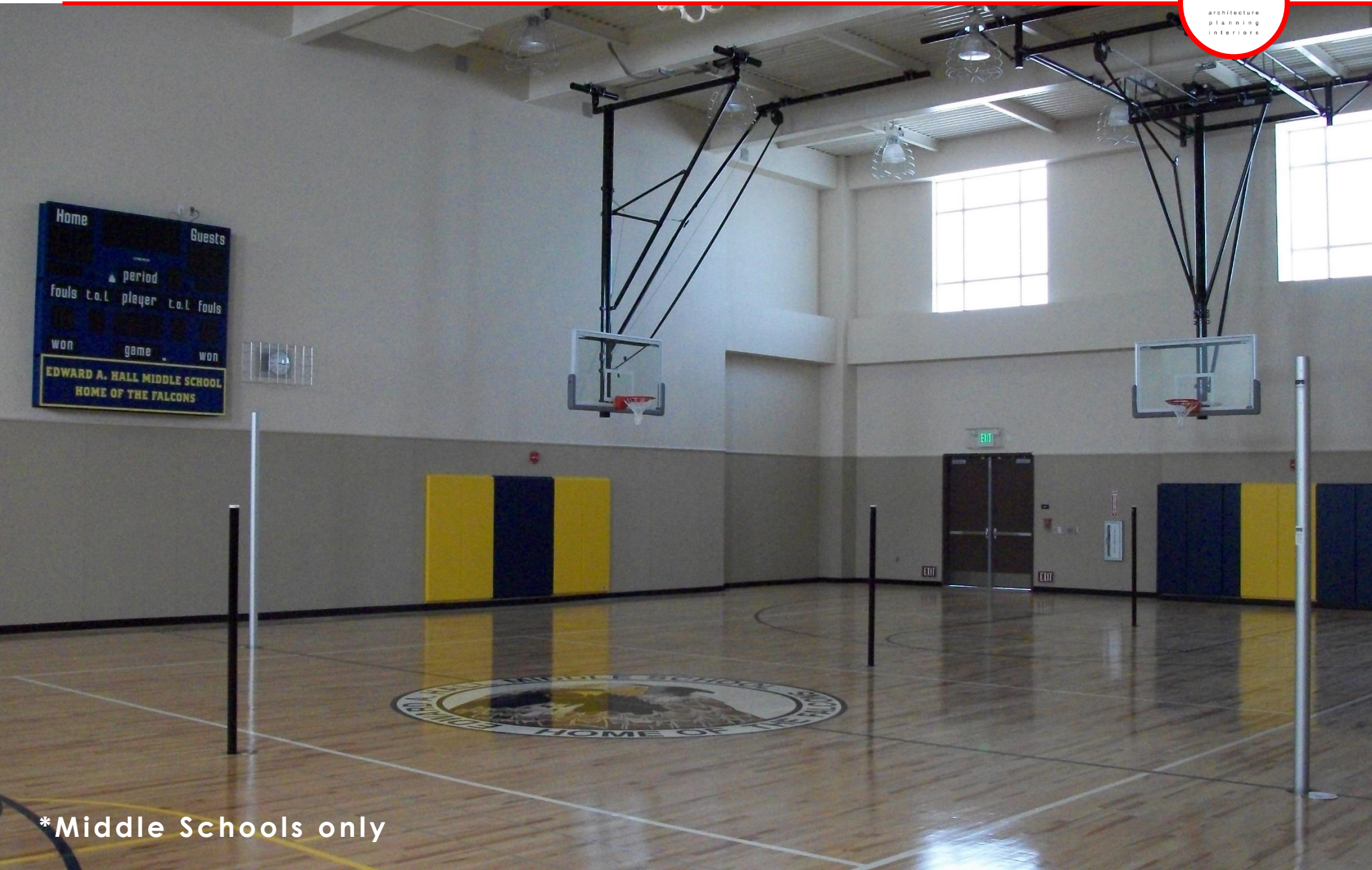


\* Middle Schools only



- Existing Lockers
- Storage
- Digital Playground
- Group Presentation & Lecture
- Fab Lab
- Storage

# BCA Model School MULTIPURPOSE



\*Middle Schools only

# Q & A

