

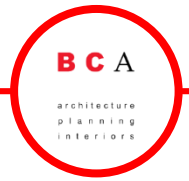


Huntington Beach City School District



Conceptual District Vision – Perry Elementary School Site Presentation

- 1. Background of Completed Facilities Needs Assessments**
- 2. Overview of District Wide Recommended Priorities**
- 3. Preliminary Goals and Objectives**
- 4. Existing Campus Conditions**
- 5. Model Classroom and School, 21st Century Learning Overview**
- 6. Q&A**



- 1. Site Visits Were Conducted on 8/3/16 to Understand the District's Campuses**
- 2. BCA Analyzed Findings From the Site Visits**
- 3. Preliminary Priorities For Each Campus Were Established with the Superintendent and Multiple Members of the M&O Staff.**
- 4. Completed Facilities Needs Assessment Reports that Summarized BCA Findings and Recommendations**

Priority 1: 21st Century Classrooms and upgrades to portables, AB300 [DSA will require it to be in this phase], ADA, electrical gear/service upgrades, abatement, restroom and ADA upgrades, roof replacement, plaster repair at Dwyer.

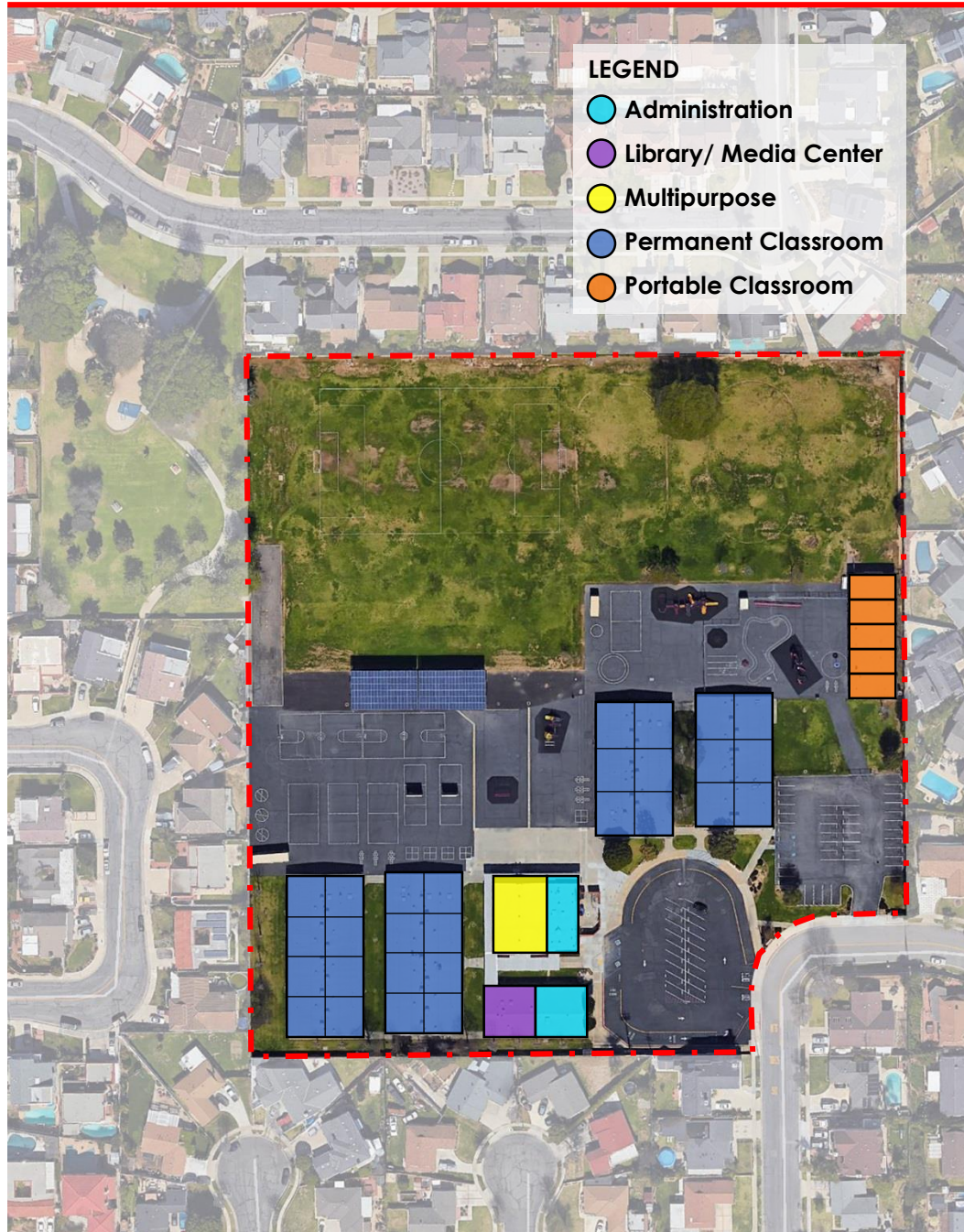
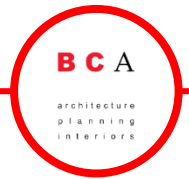
Priority 2: Multipurpose and STEAM Labs at the [2] Middle Schools, LED lighting and lighting controls, air conditioning and controls, new playground at Smith, Admin. rework, replace concealed spline ceilings at Sowers, upgrade Auditorium at Dwyer.

Priority 3: Learning Commons.

Priority 4: Safety and security single point of entry/exit at Admin., site fencing, remove/modify walkway canopies, restrict roof access, and portables to permanent.

1. Modernize Classrooms and Create 21st Century Standard for Huntington Beach City SD.
2. Code, Health, Infrastructure, Safety and Security.
3. Creating 21st Century Learning Environments.
 - Outdoor Learning, Maker's Labs, STEAM Labs, Learning commons
4. Repurpose Buildings/Rooms where necessary

Existing Campus Conditions PERRY ELEMENTARY SCHOOL



Campus Analysis

Site	10.18 acres
Year Built	1964
Last Modified	2003
Grade Levels	Preschool, Preppy, K-5
Permanent Classrooms	29
Portable Classrooms	5
Special Day Class	1 of 5 portables

Campus Capacity

Current Enrollment	467
Permanent Classroom Capacity	812 [28 students / classroom]
Permanent Classrooms Needed	0

Summary of Findings

- New windows required.
- Hardscape requires replacement.
- Need new electrical service to Admin. and Multipurpose.
- Admin. office requires reconstruction.
- Site access control/fencing needed.
- Clocks, phones, bells and cameras required.
- Lighting is not Title 24 compliant, provide interior LED's. Exterior LED fixtures complete.
- Roof replacement needed.



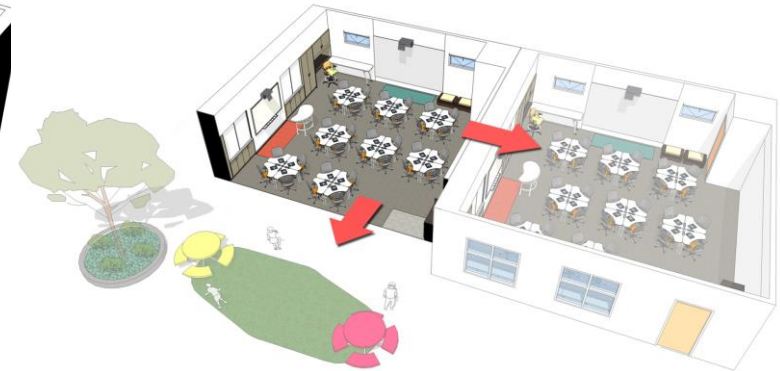
“Good”

- 1 Interactive Display
- Rectangular Desks
- White Board Wall



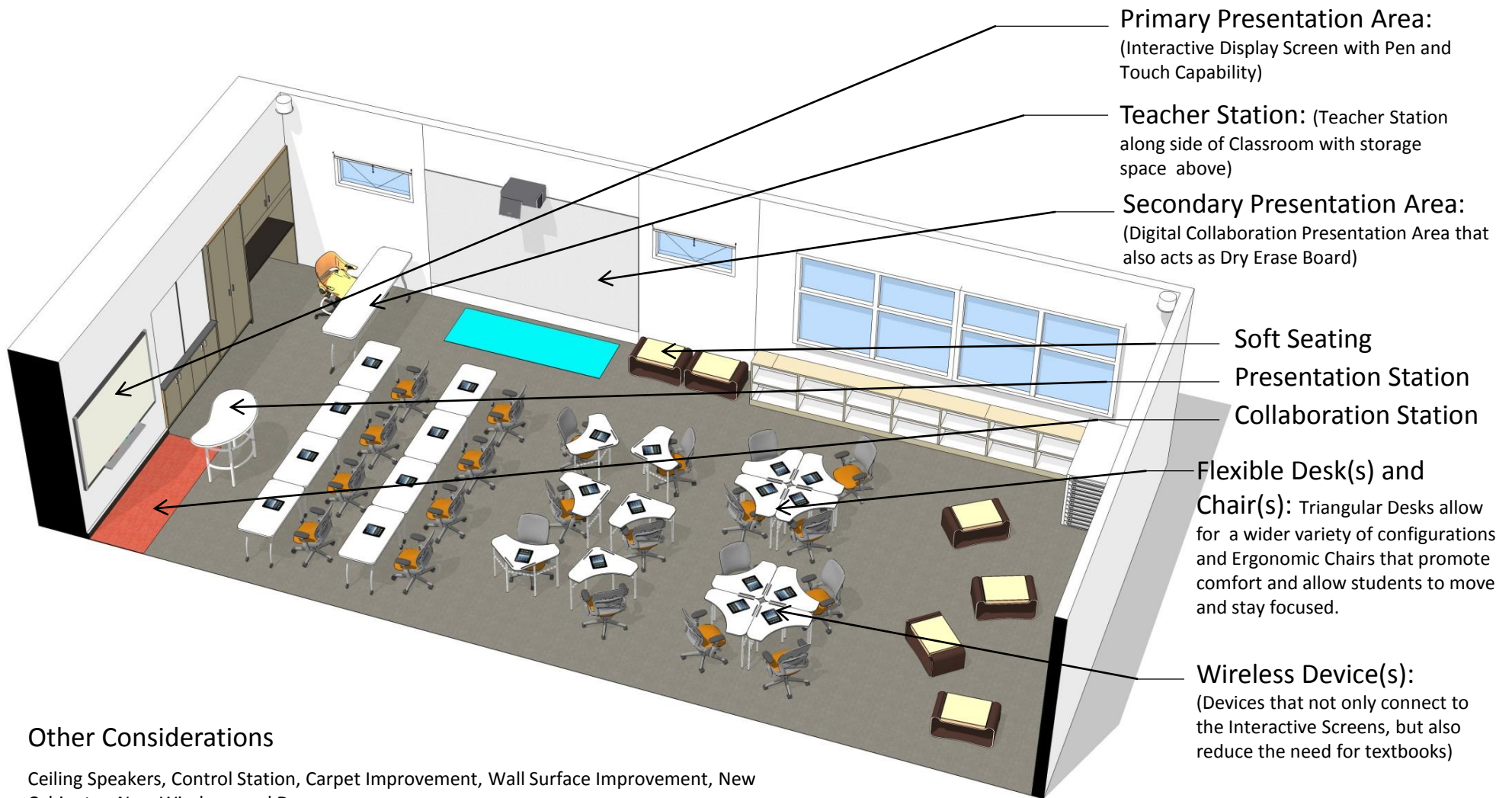
“Better”

- 2 Interactive Displays (1 Display and 1 Interactive White Board)
- Triangular Desks
- Soft Seating



“Best”

- 2 Interactive Displays (1 Display and 1 Interactive White Board)
- Triangular Desks & Soft Seating
- Nanowalls between Classrooms
- Sliding Doors that open up to Outdoor Learning



Primary Presentation Area:
(Interactive Display Screen with Pen and Touch Capability)

Teacher Station: (Teacher Station along side of Classroom with storage space above)

Secondary Presentation Area:
(Digital Collaboration Presentation Area that also acts as Dry Erase Board)

Soft Seating

Presentation Station

Collaboration Station

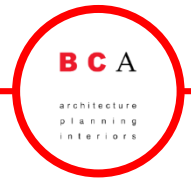
Flexible Desk(s) and Chair(s): Triangular Desks allow for a wider variety of configurations and Ergonomic Chairs that promote comfort and allow students to move and stay focused.

Wireless Device(s):
(Devices that not only connect to the Interactive Screens, but also reduce the need for textbooks)

Other Considerations

Ceiling Speakers, Control Station, Carpet Improvement, Wall Surface Improvement, New Cabinetry, New Windows and Doors.

BCA Model School LEARNING COMMONS



BCA Model School OUTDOOR LEARNING

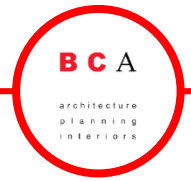




The Makers Learning Labs allow students to collaborate and work together on various projects. The Makers Labs fit into 21st Century Learning due to the flexibility in its structure and the ways in which it allows students to learn from one another.



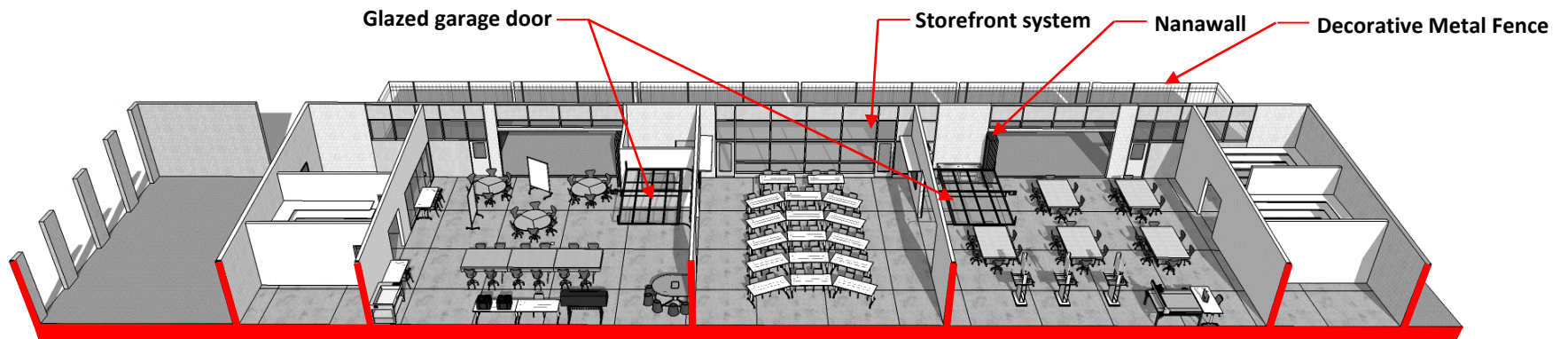
BCA Model School BUENA PARK DEMONSTRATION CLASSROOM



BCA Model School DARTMOUTH STEM LAB

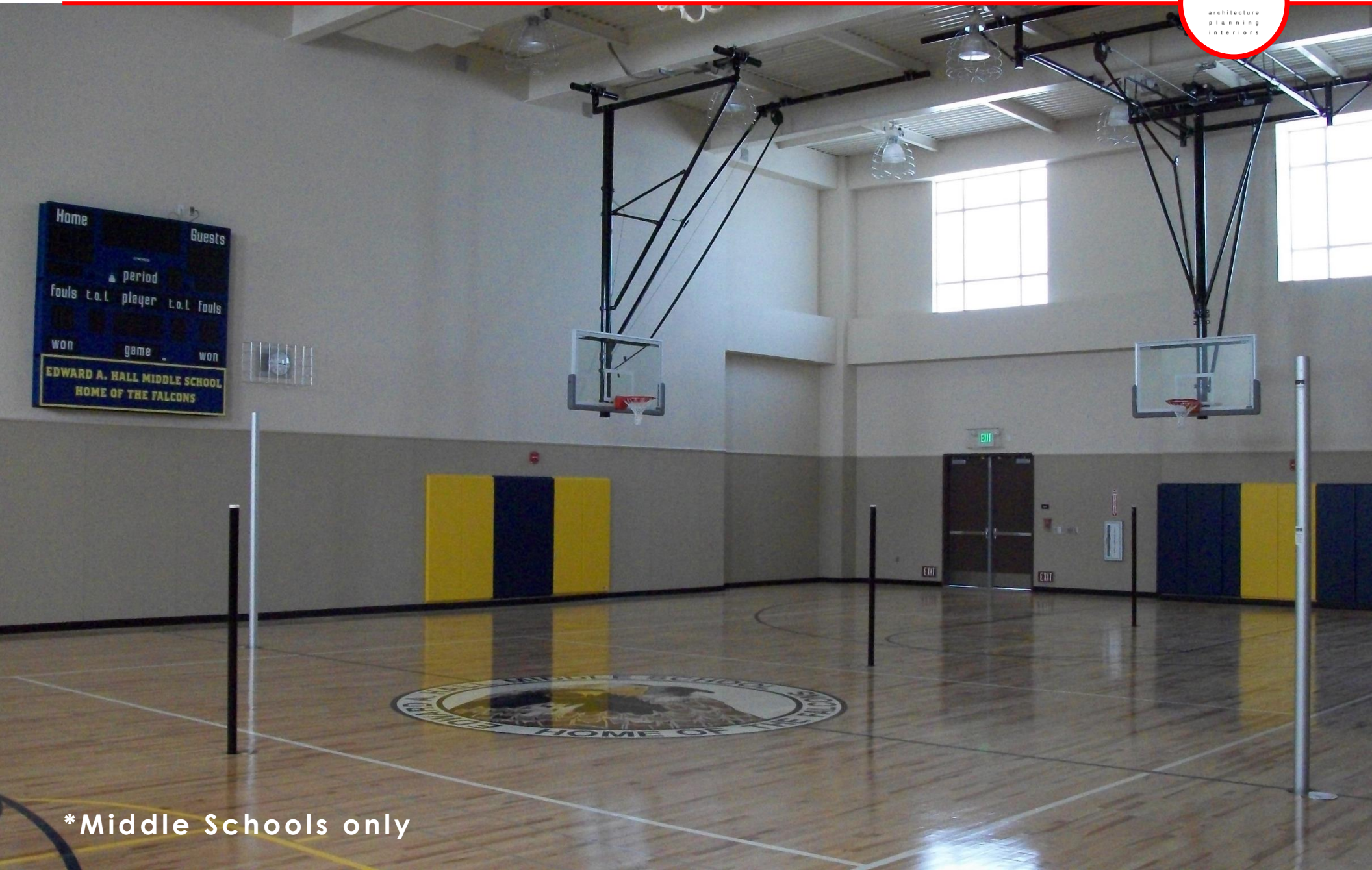


* Middle Schools only



- Existing Lockers
- Storage
- Digital Playground
- Group Presentation & Lecture
- Fab Lab
- Storage

BCA Model School MULTIPURPOSE



*Middle Schools only

Q & A

