



Huntington Beach City School District

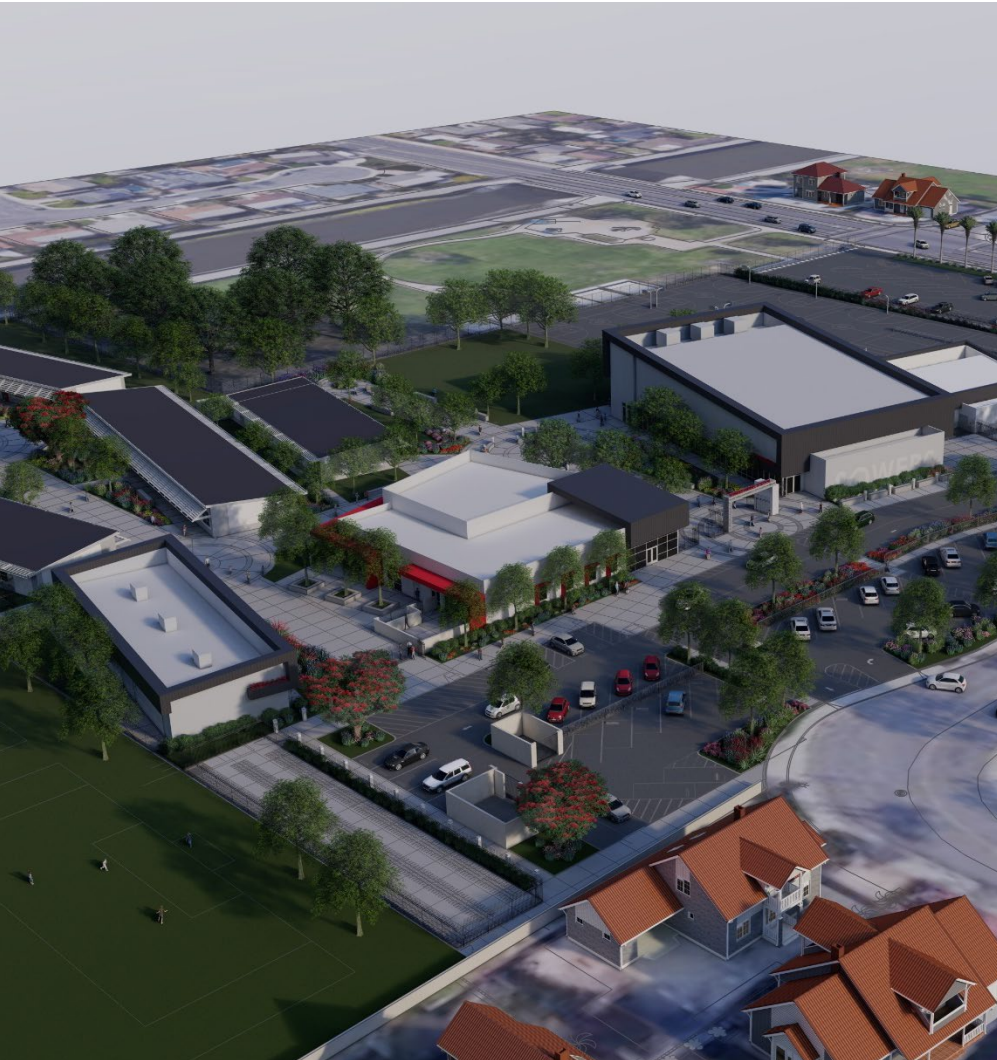


Citizen's Bond Oversight Committee Meeting

November 2, 2022

Agenda

1. Series C Project Updates
2. Sowers MS Update



Series C Project Status



Series C Projects:

1. **Eader Elementary School Modernization Project (Two Phases)**
2. **Peterson Elementary School Modernization Project (Two Phases)**
3. **Sowers Middle School New Construction Project (inc. Gym/ STEM Lab)**
 - Tasks Completed
 - Budget
 - Funding
 - Milestones



Series C Project Status



Series C Projects:

Eader Elementary School Modernization Project

Budgeted Cost \$6,197,748

GMP established in April 2021 for \$10,255,710

Construction on Phase 1 began June 2021 (will last two summers)

Phase 2 has been completed



*Figures above do not include separate budgets for furniture/ technology and demonstration classrooms

Series C Project Status



Series C Projects:

Peterson Elementary School Modernization Project

Budgeted Cost \$8,002,264

GMP established in June 2021 for \$15,935,271

Construction on Phase 1 began June 2021 (will last two summers)

Phase 2 has been completed



*Figures above do not include separate budgets for furniture/ technology and demonstration classrooms

Series C Project Status



Series C Projects:

Sowers Middle School Replacement Project

Tasks Completed:

- Increment 1 and Increment 2 have been DSA approved
- Construction Documents have been bid and a **GMP*** has been established
- **Project Furniture Package*** has been bid
- **Testing Contracts*** have been procured
- **Inspector of Record (IOR) Contract*** has been procured

* Items in **red** were approved by the Board at the 10/18/22 meeting.



Series C Project Status



Series C Projects:

Sowers Middle School Replacement Project

Budget:

Phase 1 and 2 Construction Cost (Not inc. Modulares)	\$47,337,621
Construction Contingency (5%)	\$2,366,881***
Subtotal Construction Cost (Construct 1 - GMP)	\$49,704,502
Modular Building Cost (AMS Contract)	\$11,872,285
Modular Building Contingency (5%)	\$290,203***
Subtotal Modular Building Cost	\$12,162,488
Subtotal Construction & Modular Building Cost	\$61,866,990
Soft Costs (Not including Furniture)	\$7,426,637*
Soft Costs Contingency (5%)	\$371,332***
Furniture Cost (OnPoint Contract)	\$1,865,837
Furniture Contingency (5%)	\$93,292***
Subtotal Soft Costs & Furniture	\$9,757,098
TOTAL PROJECT COST ESTIMATE	\$71,658,253
Total Project Estimate presented on April 19, 2022	\$71,305,216
Total Variance	(\$318,872)**
* Represents 12.05% of the project construction cost	
** Represents a (.05%) variance since April	
*** Total Contingency carried = \$3,123,335	

Series C Project Status



Series C Projects:

Sowers Middle School Replacement Project

Funding:

Total Project Estimate	\$71,658,253
Measure Q Funds	\$43,458,849*
State Bond Funds	\$4,072,728
Developer Fees	\$1,000,000
Gisler Sale Proceeds	\$23,126,676*
Total Project Funding	\$71,658,253

*includes estimated interest on funds



Sowers Middle School Update



Series C Projects:

Sowers Middle School Replacement Project

Milestones:

100% Design Development Completed – 02/15/2022

100% Construction Documents Completed – 04/19/2022

DSA Submittal Submitted – 05/04/2022

Bidding of Subtrades **Conducted** – 08/08/2022 – 09/22/2022

DSA Approval **Achieved** – 10/18/2022

Board Acceptance of GMP, Furniture Bids and Testing/Inspections Achieved – 10/18/22



Q & A



Brian Whitmore, AIA, LEED brianw@studiow-architects.com 916-626-1303
President/ CEO – Studio W Architects

Michael Henning, AIA, LEED michaelh@wtudiow-architects.com
949-293-2524 Associate Principal – Studio W Architects

Tony Pacheco Taylor, AIA, LEED tonyp@studiow-architects.com
949-774-2906 Associate Client Leader – Studio W Architects

Chelsea Pozar, CPSM chelseap@studiow-architects.com 916-254-5605
Associate Marketing & Business Development Director – Studio W Architects